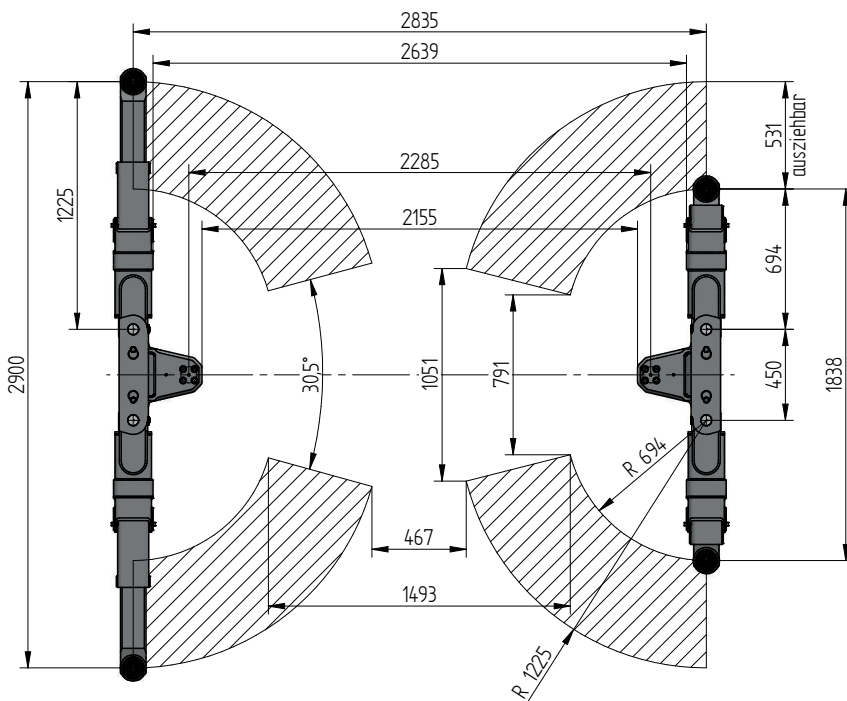
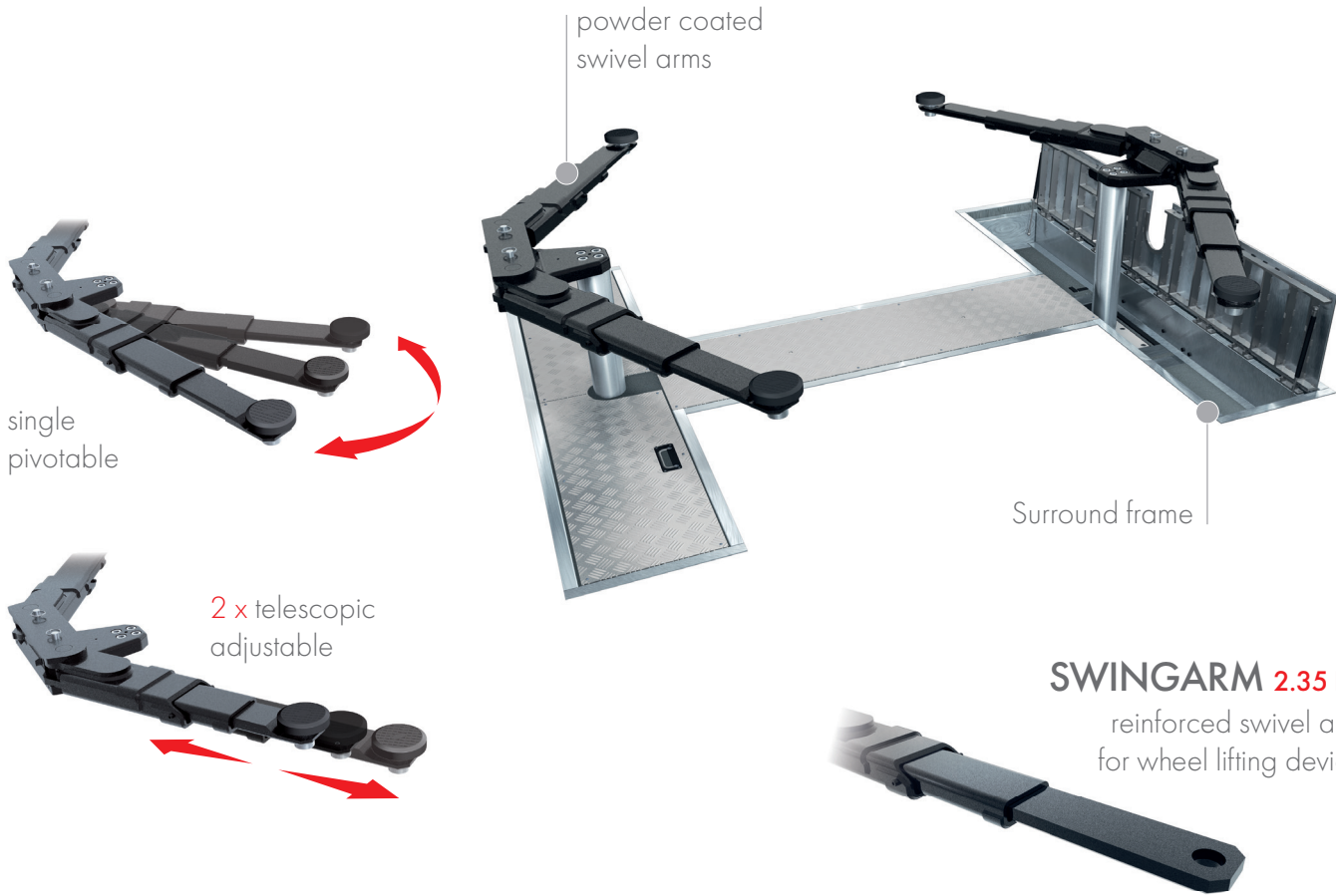


## FLUSH MOUNTED

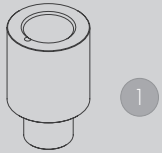


## TECHNICAL DATA

Capacity	3500 kg
Move in height	95 mm
Piston diameter	123 mm
Piston distance	2285 mm
Motor output	3,0 kW
Power connector	400 V/16 A
Cable length to control	11 m
Lifting time	≈ 35 sec.
Lowering time	≈ 35 sec.

Support Swingarm 2.35	109229
Support Swingarm 2.35 reinforced	111590
Installation cassette STEEL 2285 mm	2020XX
Installation cassette STEEL 2285 mm galvanized	2021XX
Lifting unit oil 3,5 + 2285 mm - K pre-assembled in installation cassette	110114
Lifting unit oil 3,5 + 2285 mm - H packed in wooden box	110115
Surround frame Swingarm 2285	109737

## ACCESSORIES



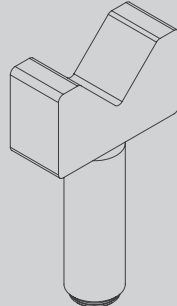
1

1 Stacking adapter  
extension 89 mm  
d 50 x 89 mm  
109679 (1 Set / 4 Pieces)



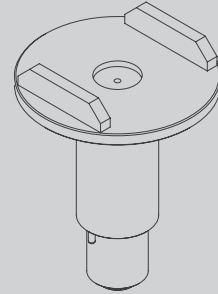
2

2 Stacking adapter  
extension 127 mm  
d 50 x 127 mm  
109680 (1 Set / 4 Pieces)



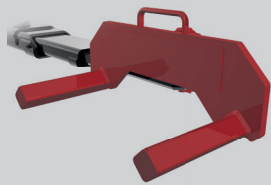
3

3 Stacking adapter  
V-shape  
d 50 / 155 - 255 mm  
112107 (1 Set / 4 Pieces)



4

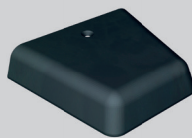
4 Stacking adapter  
U-form  
d 50  
110397 (1 Set / 4 Pieces)



Wheel lifting device  
(1 set / 4 pcs.)

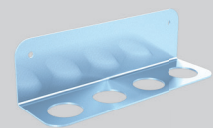
GA490	GA550
ø wheel 590 - 690 mm	ø wheel 670 - 770 mm
112051	112052

Mounting adapter  
Swingarm RS  
(1 set / 4 pcs.)  
112145



Rim protector

110407 (1 Set / 2 pcs.)



Bracket for stacking-  
adapter extension

111578

**Herrmann AG**  
Bahnhofstrasse 32  
D-93483 Pöding

+49 (0)9461/91388 50  
sales@herrmann-lifts.com  
www.herrmann-lifts.com