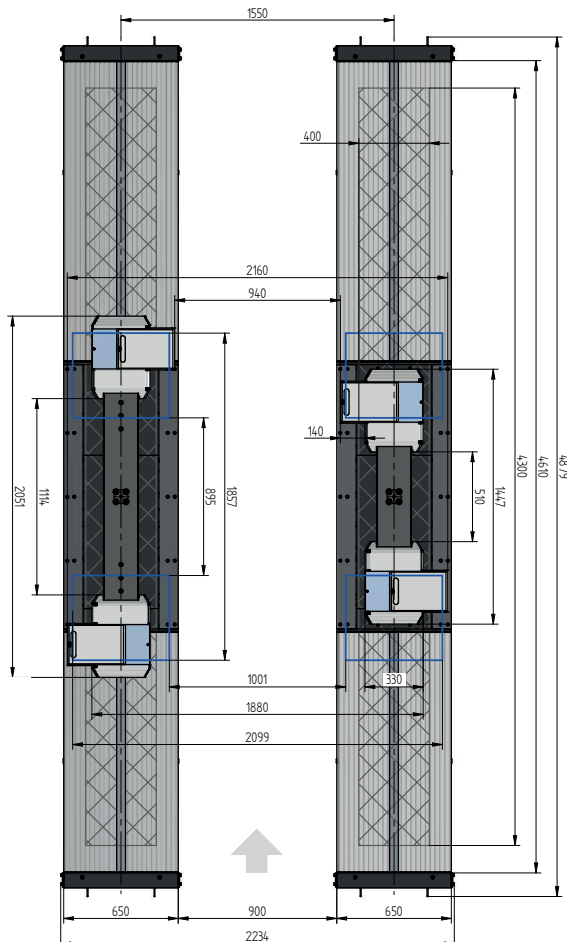
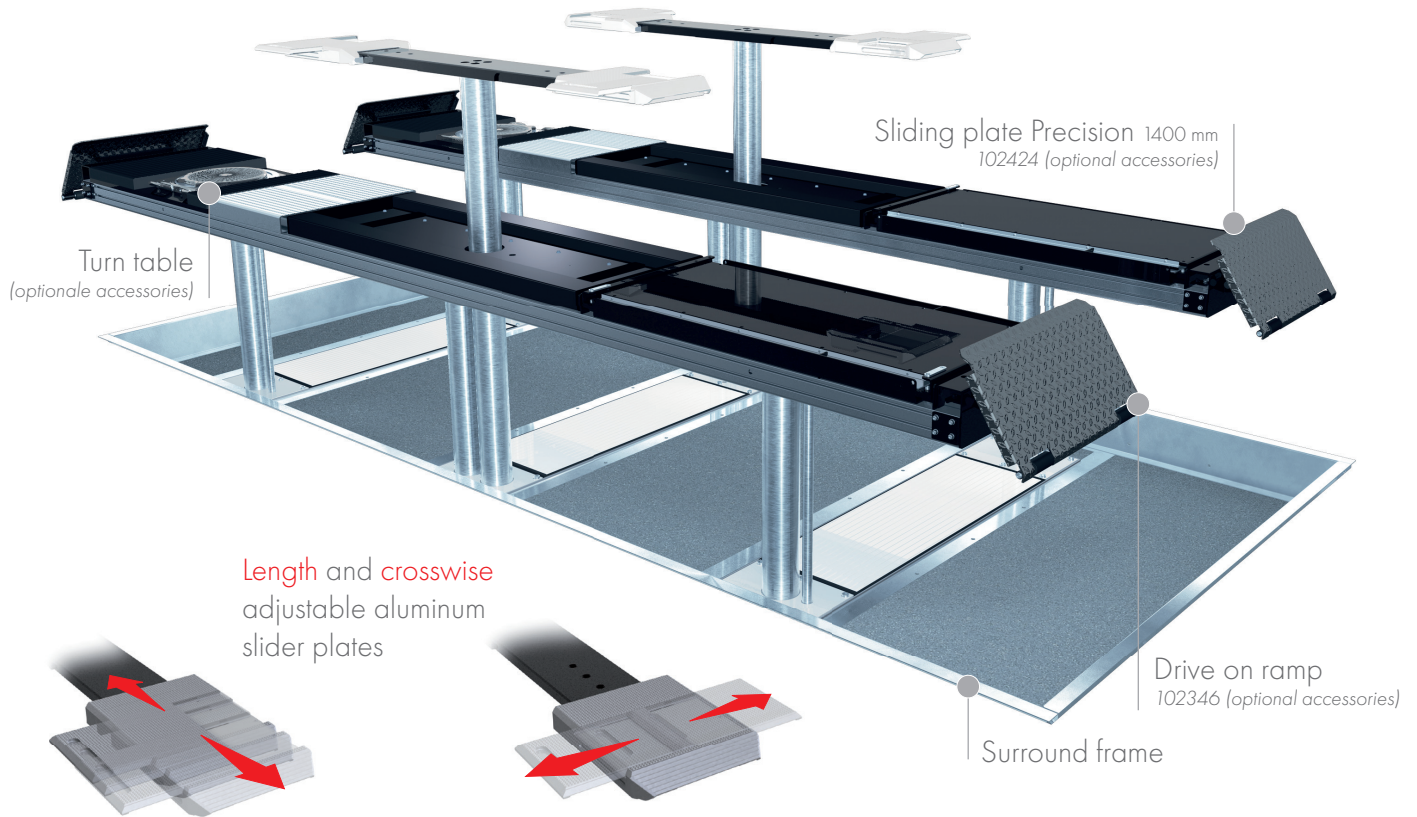


FLUSH MOUNTED



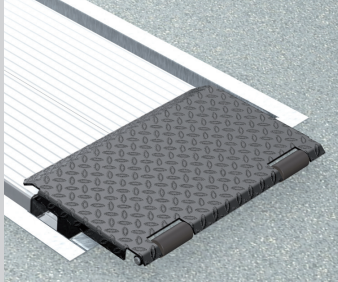
TECHNICAL DATA

capacity	4000 kg
wheel free lift	3500 kg
platform length	4800 mm
platform height	180 mm
drive over height wheel free unit	60 mm
piston diameter	123 mm
piston distance	1550 mm
motor output	3,0 kW
power connector	400 V/16 A
cable length to control	11 m
lifting time	≈ 35 sec.
lowering time	≈ 35 sec.

Platform support Alu Track 4.40/2.35 with platform notches for wheel free system flush with platform	108615
Platform support Alu Track 4.40 with platform notches for wheel free system flush with platform and joint play tester	108614
Platform support Alu Track 4.40 with platform notches for wheel free system flush with platform, turn tables and sliding plates	108368
Installation cassettes STEEL 1550 mm	2430XX
Installation cassettes STEEL 1550 mm galvanized	2431XX
Lifting unit oil 4.0 1550 mm - K pre-assembled in installation cassette	111611
Lifting unit oil 4.0 1550 mm - H packed in wooden box	
Surround frame Rectangle 6-piston 4800 mm	108626

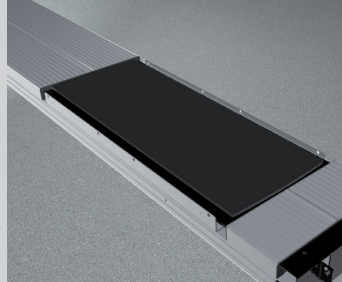
ALU TRACK 4.40/2.35

ACCESSORIES



Drive on ramp

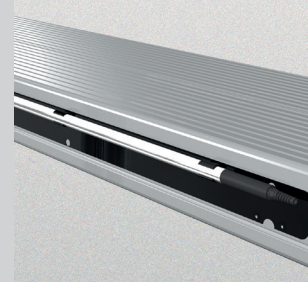
102346



Sliding plate

Precision 1400 mm

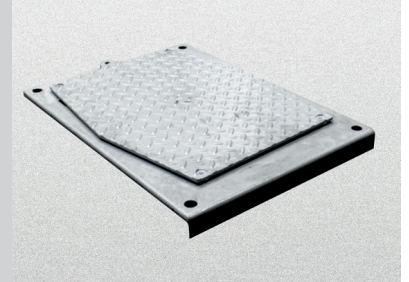
102424



Lighting

LED

111598



Joint play tester

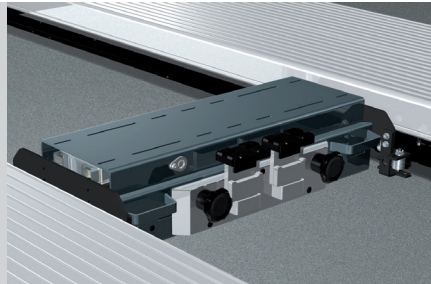
108613



Slide rail

4800 mm

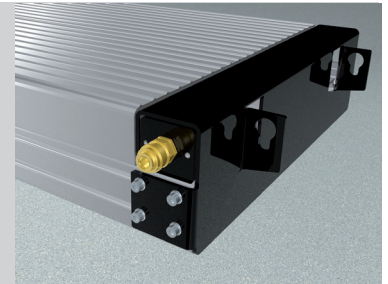
102375



Axle lifter 2600 kg

pneumatic, without slide rails

105063



Compressed air supply

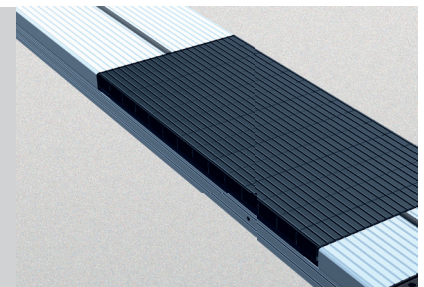
102407



Wheel alignment supports

1350 mm 600 mm

102377 102381



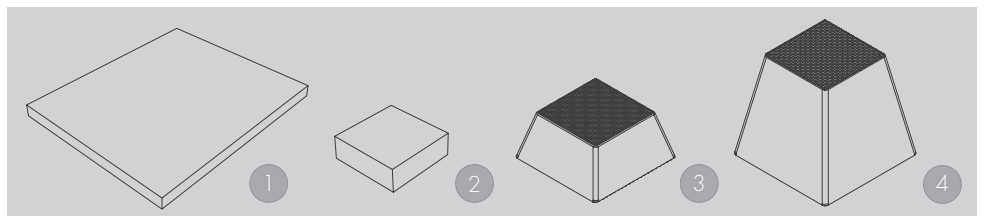
Rubber elements

50 mm 100 mm 200 mm

111677 111678 111679

Herrmann AG
Bahnhofstrasse 32
D-93483 Pöding

Phone: +49 (0)9461/91388 50
E-Mail: sales@herrmann-lifts.com



Rubber pads

1 | 290 x 335 x 20 mm 2 | 120 x 120 x 40 mm
102275 102274

Rubber pads Pyramid

3 | 70 mm 4 | 140 mm
102273 102291

www.herrmann-lifts.com