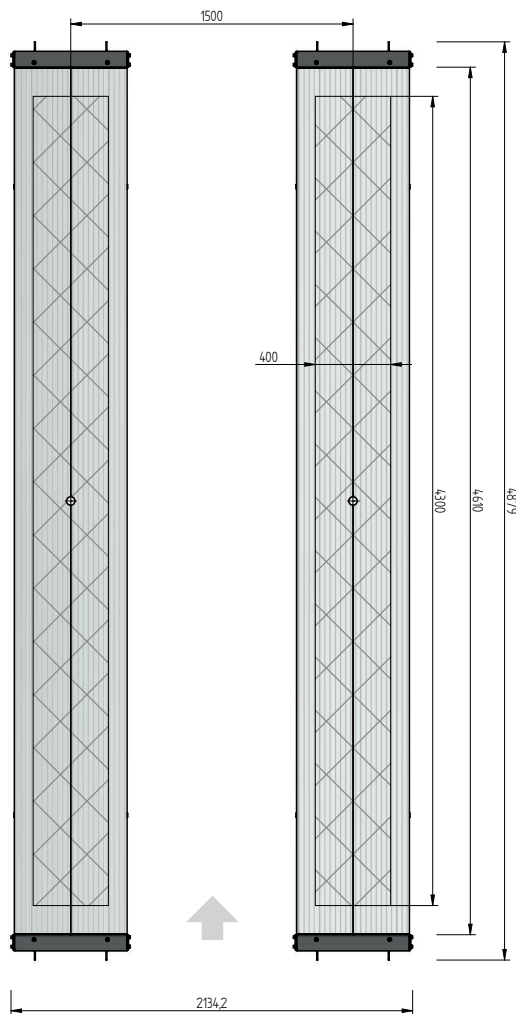
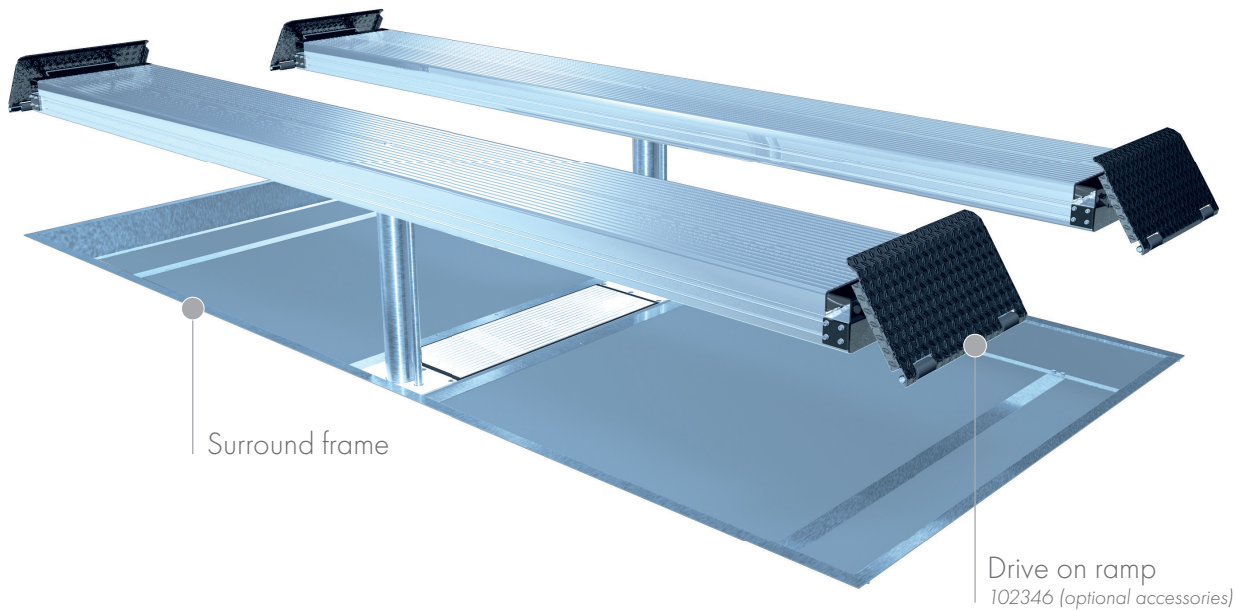


FLUSH MOUNTED



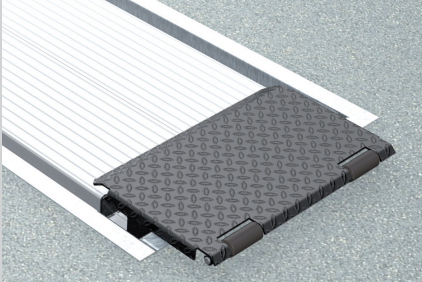
## TECHNICAL DATA

capacity	5000 kg
platform length	4800 mm
platform height	180 mm
piston diameter	123 mm
piston distance	1500 mm
motor output	3,0 kW
power connector	400 V/16 A
cable length to control	11 m
lifting time	≈ 35 sec.
lowering time	≈ 35 sec.

Platform support Alu Track 2.50	104980
Installation cassettes STEEL 1500 mm	2030XX
Installation cassettes STEEL 1500 mm galvanized	2031XX
Lifting unit oil 5,0   1500 mm - K pre-assembled in installation cassette	110204
Lifting unit oil 5,0   1500 mm - H packed in wooden box	110205
Surround frame Rectangle 2-piston 4800 mm	106187

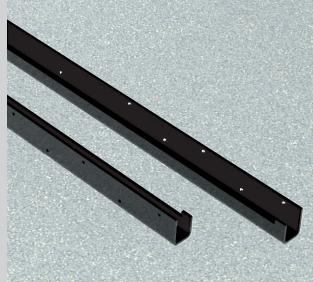
# ALU TRACK 2.50

## ACCESSORIES



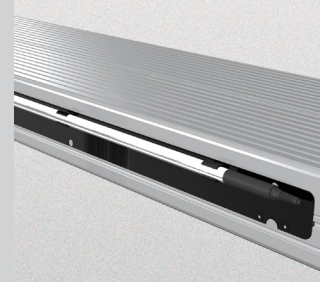
Drive on ramp

102346



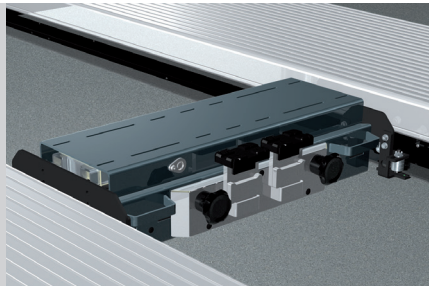
Slide rail

4800 mm  
102375

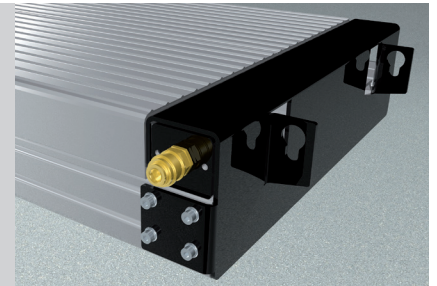


Lighting  
LED

102394



Axle lifter 2600 kg  
pneumatic, without slide rails  
105063



Compressed air supply

102407

**Herrmann AG**  
Bahnhofstrasse 32  
D-93483 Pöding

Phone: +49 (0)9461/91388 50  
E-Mail: [sales@herrmann-lifts.com](mailto:sales@herrmann-lifts.com)

[www.herrmann-lifts.com](http://www.herrmann-lifts.com)

Amendments and mistakes reserved. All illustrations are not binding.

we lift cars