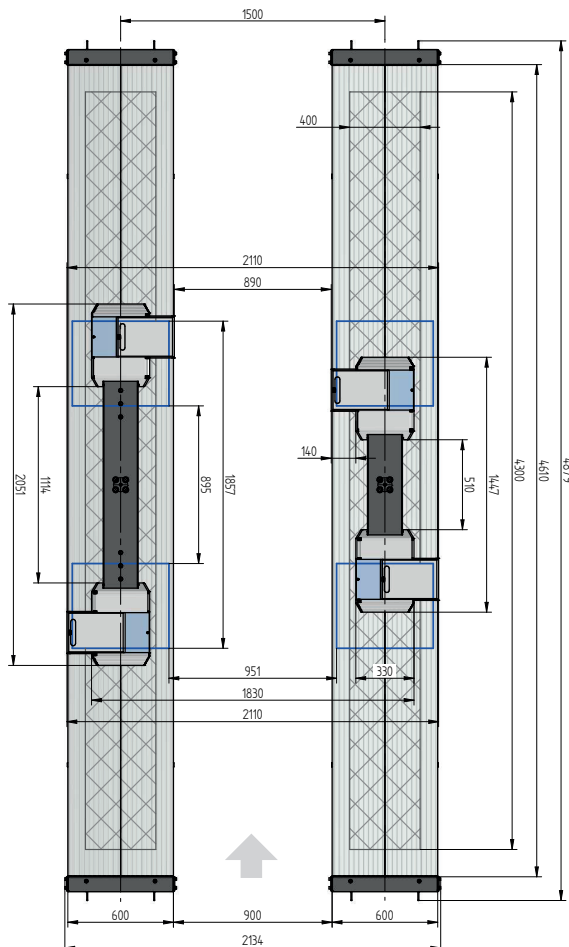
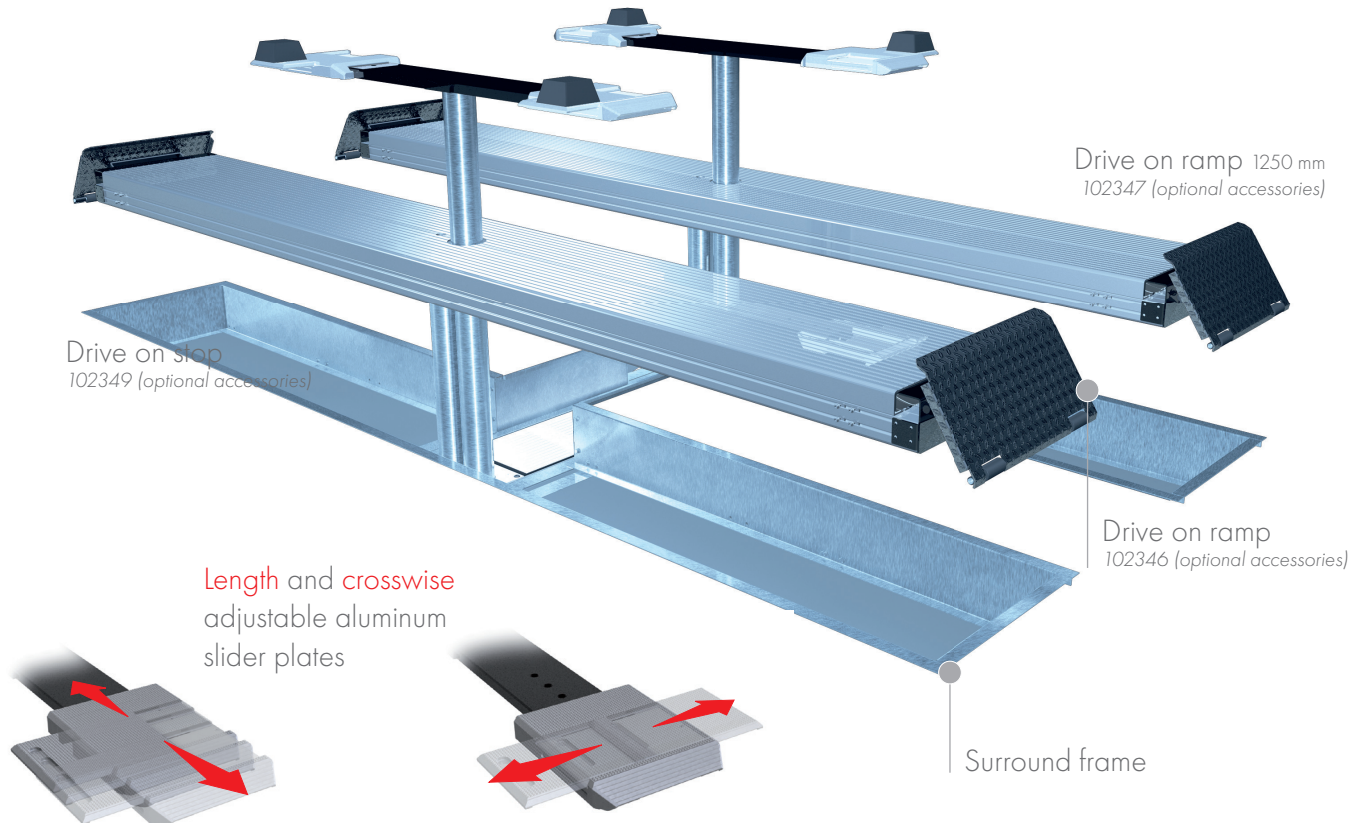


FLUSH MOUNTED



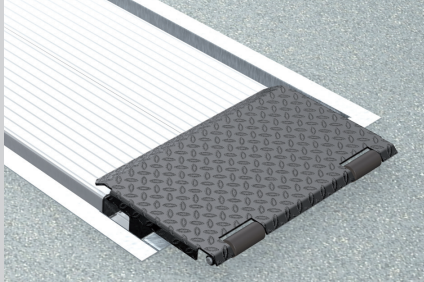
TECHNICAL DATA

capacity	5000 kg
wheel free lift	3500 kg
effect. raise height platform	2019 mm
effect. raise height wheel free unit	1979 mm
platform length	4800 mm
platform height	180 mm
drive over height wheel free unit	60 mm
piston diameter	123 mm
piston distance	1500 mm
installation depth	2443 mm
motor output	3,0 kW
power connector	400 V/16 A
cable length to control	11 m
lifting time	≈ 35 sec.
lowering time	≈ 35 sec.

Platform support Alu Track 2.50 Duplo	102756
Support Uni 2.35 plus	102640
Installation cassette STEEL 1500 mm	2190XX
Installation cassette STEEL 1500 mm galvanized	2191XX
Lifting unit oil 5,0 t Duplo 3,5 t 1500 mm - K pre-assembled in installation cassette	111603
Lifting unit oil 5,0 t Duplo 3,5 t 1500 mm - H packed in wooden box	111604
Surround frame H 2-piston 4800 mm	102361

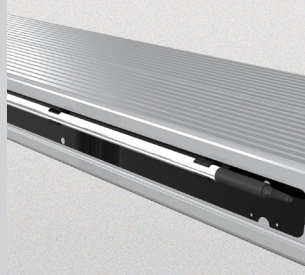
ALU TRACK 2.50 DUPLO UNI PLUS

ACCESSORIES



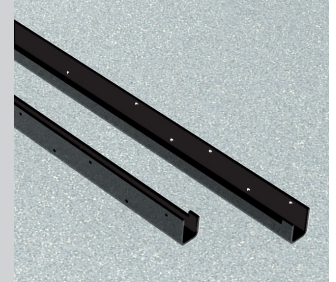
Drive on ramp

102346



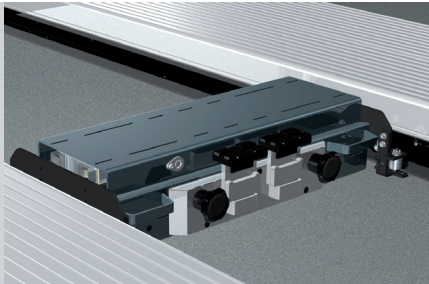
Lighting
LED

111598



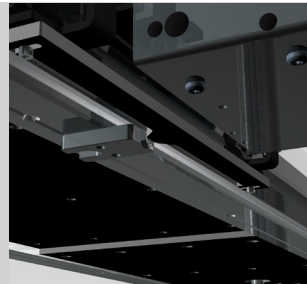
Slide rail

4800 mm
102375



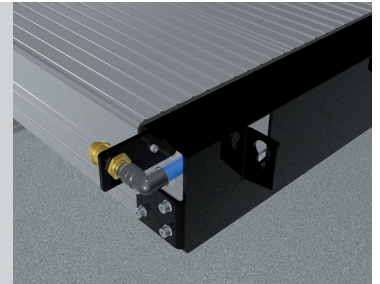
Axle lifter 2600 kg
pneumatic, without slide rails

105063



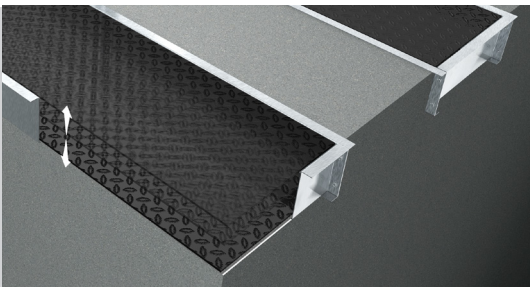
Position sensor
for axle lifter

102456



Compressed air supply

105617



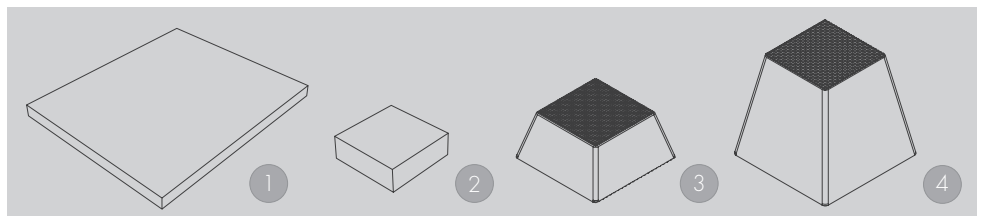
Autom. floor levelling system

2-piston Duplo 4800 mm

102365

Herrmann AG
Bahnhofstrasse 32
D-93483 Pöding

Phone: +49 (0)9461/91388 50
E-Mail: sales@herrmann-lifts.com



Rubber pads

1 | 290 x 335 x 20 mm | 102275
2 | 120 x 120 x 40 mm | 102274

Rubber pads Pyramid

3 | 70 mm | 102273
4 | 140 mm | 102291

www.herrmann-lifts.com