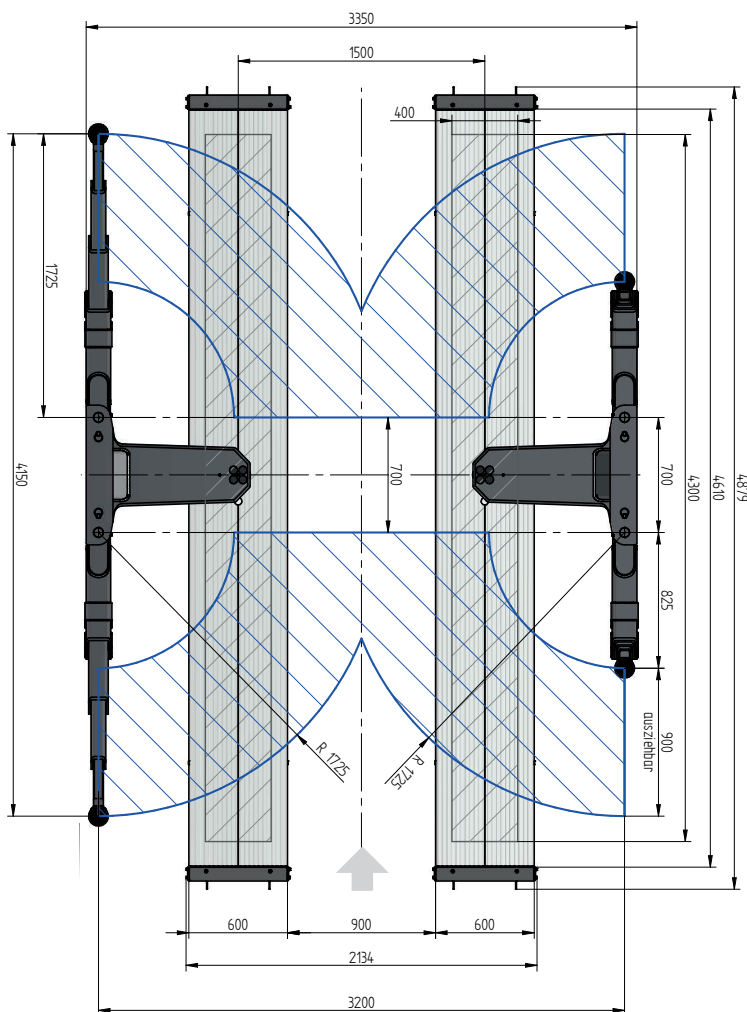
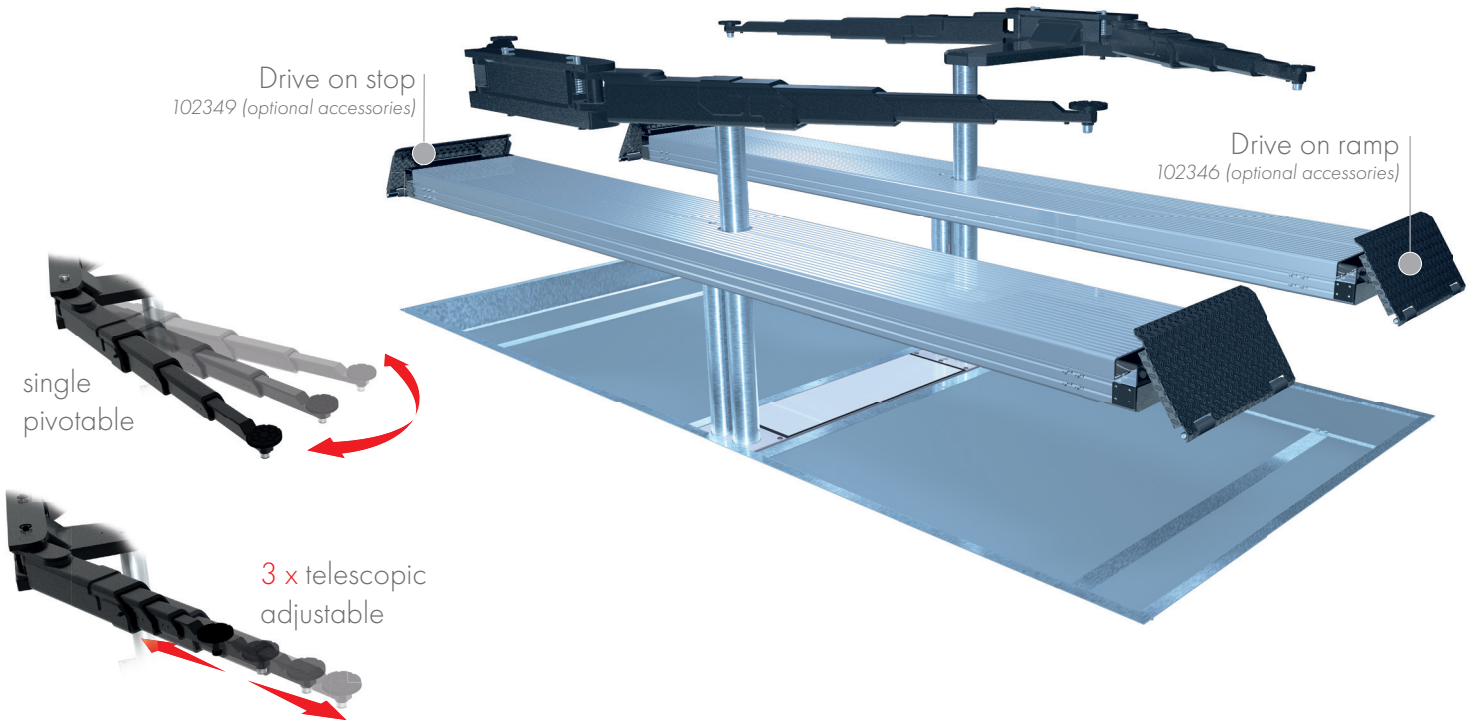


FLUSH MOUNTED



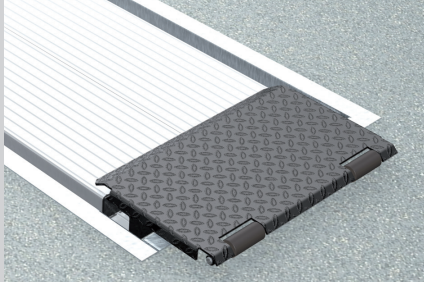
TECHNICAL DATA

capacity	5000 kg
wheel free lift	5000 kg
platform length	4800 mm
platform height	180 mm
drive over height wheel free unit	120 mm
piston diameter	123 mm
piston distance	1500 mm
motor output	3,0 kW
power connector	400 V/16 A
cable length to control	11 m
lifting time	≈ 35 sec.
lowering time	≈ 35 sec.

Platform support Alu Track 2.50 Duplo	102756
Support Swingarm 2.50-1500	112120
Installation cassette STEEL 1500 mm	2190XX
Installation cassette STEEL 1500 mm galvanized	2191XX
Lifting unit oil 5,0 l Duplo 5,0 l 1500 mm - K pre-assembled in installation cassette	111616
Lifting unit oil 5,0 l Duplo 5,0 l 1500 mm - H packed in wooden box	111617
Surround frame Rectangle 4800 mm	106187

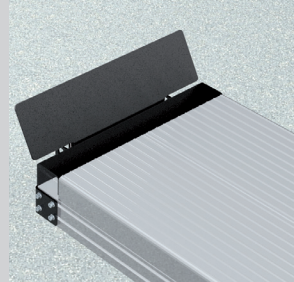
ALU TRACK 2.50 DUPLO SWING

ACCESSORIES



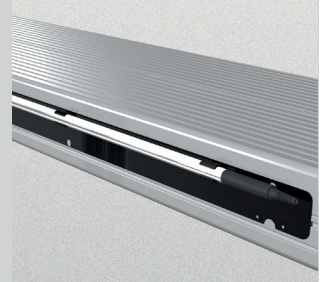
Drive on ramp

102346



Drive on stop

102349



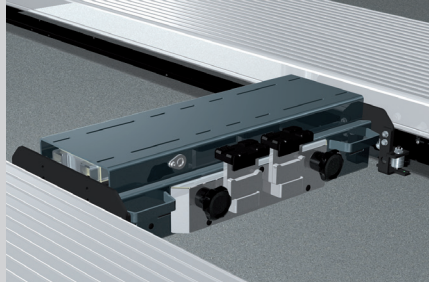
Lighting
LED

111598

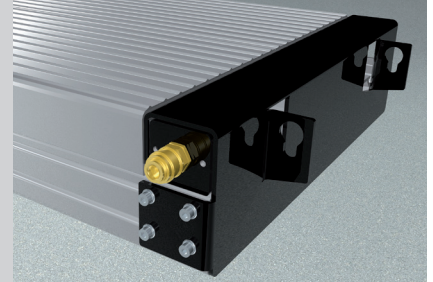


Slide rail

4800 mm
102375

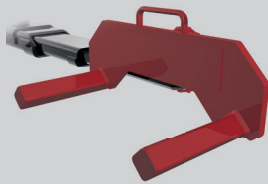


Axle lifter 2600 kg
pneumatic, without slide rails
105063



Compressed air supply

102407



Wheel lifting device

(1 set / 4 pcs.)

GA490

ø wheel 590 - 690 mm

112051

GA550

ø wheel 670 - 770 mm

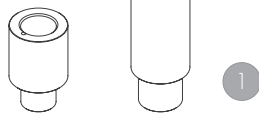
112052

Mounting adapter

Swingarm/Duplex

(1 set / 4 pcs.)

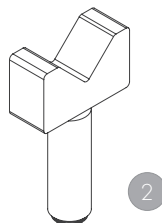
112146



1 Stacking adapter extension
89 mm 127 mm

d 50 x 89 mm d 50 x 127 mm

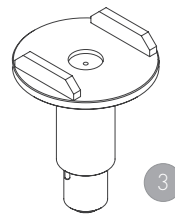
109679 (1 Set / 4 Pieces) 109680 (1 Set / 4 Pieces)



2 Stacking adapter
V-shape

d 50 / 155 - 255 mm

112107 (1 Set / 4 Pieces)



3 Stacking adapter
U-form

d 50

110397 (1 Set / 4 Pieces)

Herrmann AG
Bahnhofstrasse 32
D-93483 Pöding

+49 (0)9461/91388 50
sales@herrmann-lifts.com
www.herrmann-lifts.com