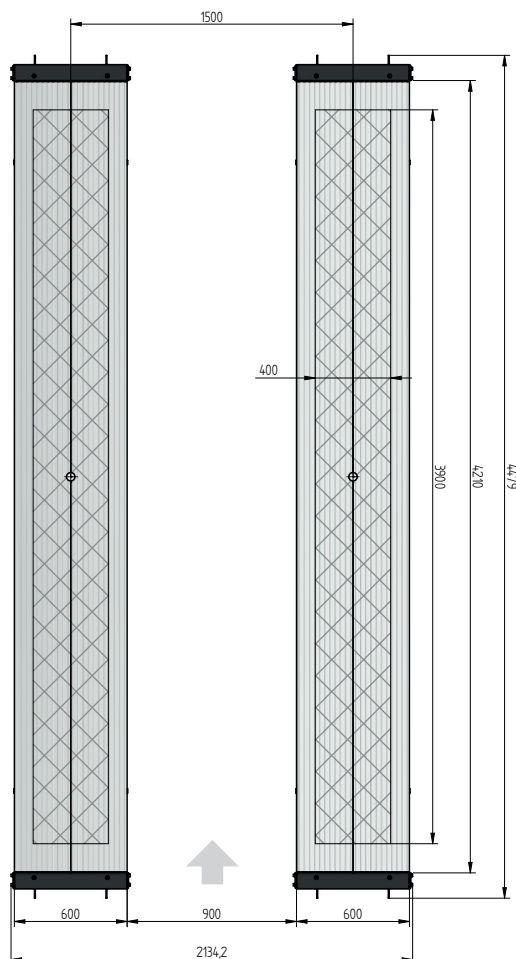
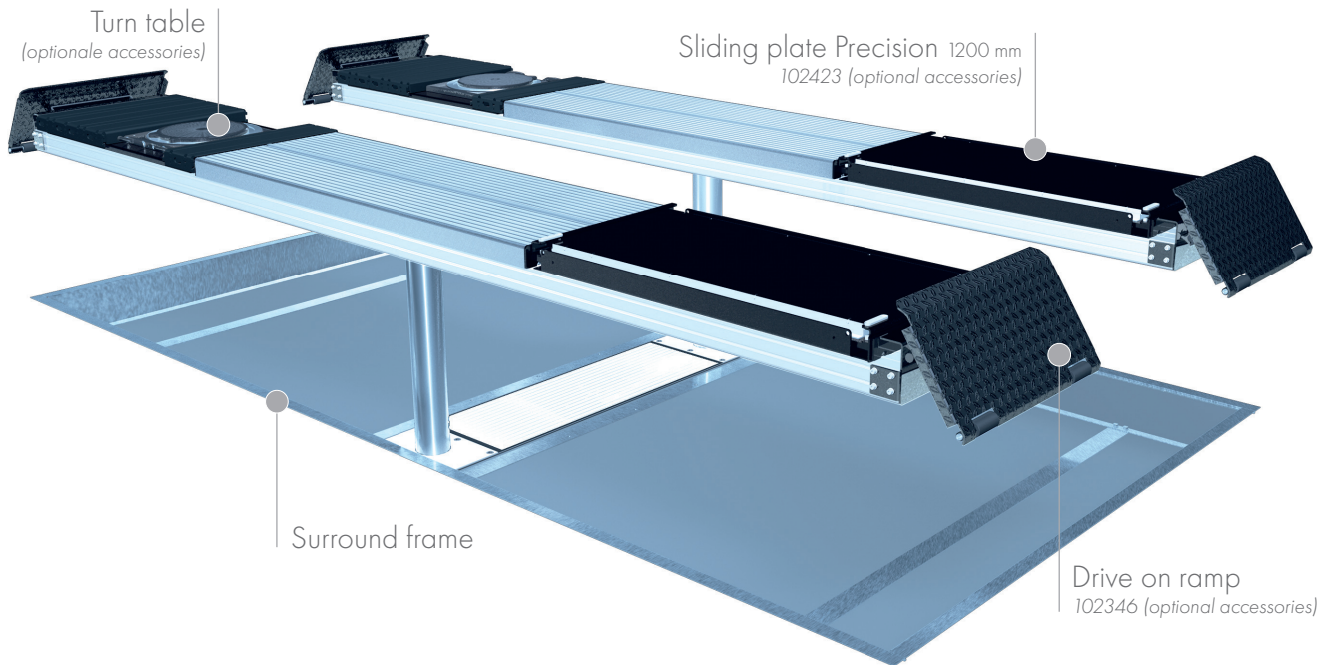


## FLUSH MOUNTED



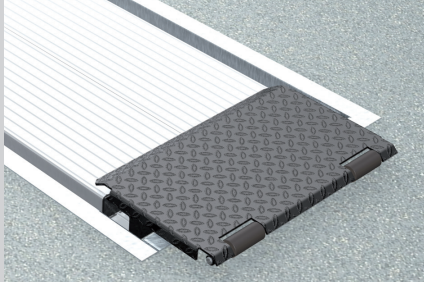
## TECHNICAL DATA

capacity	3500 kg
platform length	4400 mm
platform height	180 mm
piston diameter	123 mm
piston distance	1500 mm
motor output	3,0 kW
power connector	400 V/16 A
cable length to control	11 m
lifting time	≈ 35 sec.
lowering time	≈ 35 sec.

Platform support Alu Track 2.35 with platform notches for turn tables and sliding plates	105238
Platform support Alu Track 2.35	102698
Installation cassettes STEEL 1500 mm	2030XX
Installation cassettes STEEL 1500 mm galvanized	2031XX
Lifting unit oil 3,5 t 1500 mm - K pre-assembled in installation cassette	110200
Lifting unit oil 3,5 t 1500 mm - H packed in wooden box	110201
Surround frame Rectangle 2-piston 4400 mm	105335

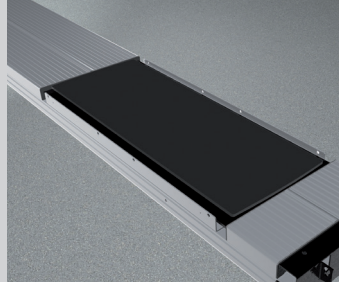
# ALU TRACK 2.35

## ACCESSORIES



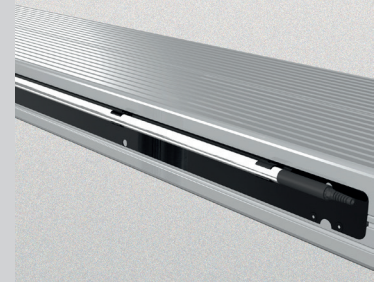
Drive on ramp

102346



Sliding plate

Precision 1200 mm  
102423



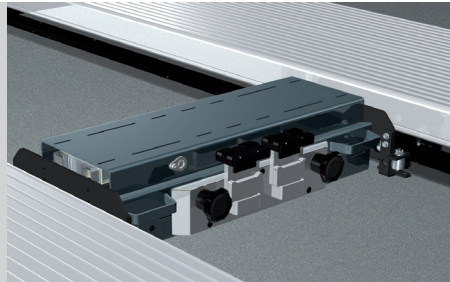
Lighting

LED  
102394

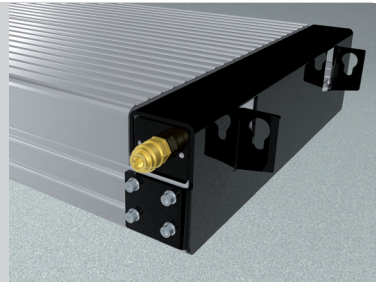


Slide rail

4400 mm  
102374



Axle lifter 2600 kg  
pneumatic, without slide rails  
105063



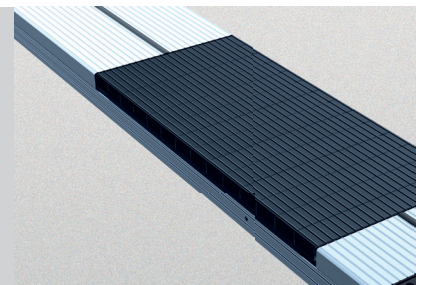
Compressed air supply

102407



Wheel alignment supports

1350 mm 600 mm  
102377 102381



Rubber elements 600 mm

50 mm 100 mm 200 mm  
111677 111678 111679

**Herrmann AG**  
Bahnhofstrasse 32  
D-93483 Pöding

Phone: +49 (0)9461/91388 50  
E-Mail: [sales@herrmann-lifts.com](mailto:sales@herrmann-lifts.com)



[www.herrmann-lifts.com](http://www.herrmann-lifts.com)