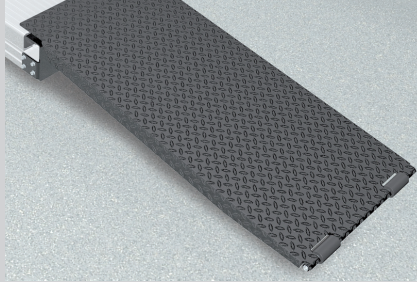
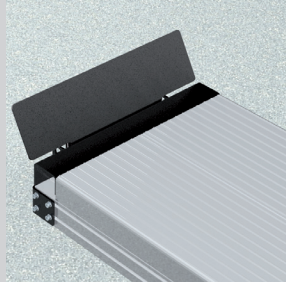


ALU TRACK 2.35 DUPLO SWING

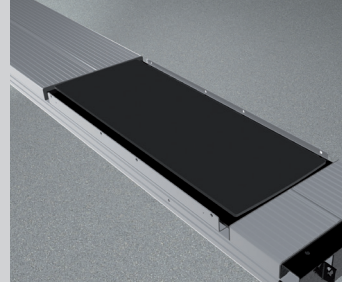
ACCESSORIES



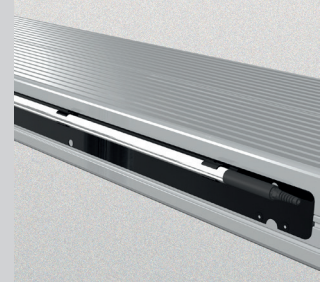
Drive on ramp
1250 mm
102347



Drive on stop
102349



Sliding plate
Precision 1200 mm
102423



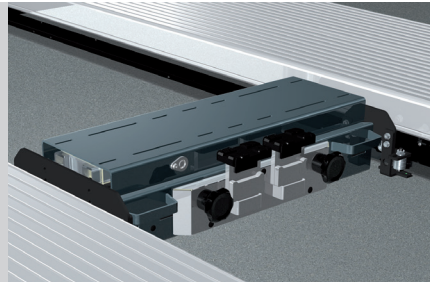
Lighting
LED
111598



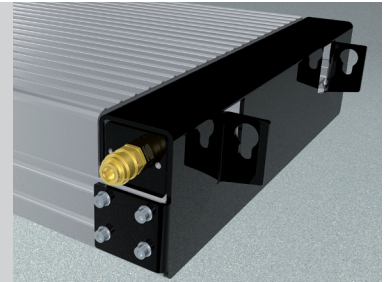
Slide rail
4400 mm
102374



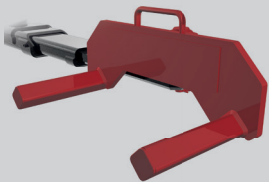
Wheel alignm. supp.
1350 mm 600 mm
102377 102381



Axle lifter 2600 kg
pneumatic, without slide rails
105063



Compressed air supply
102407

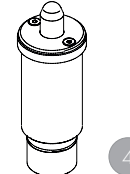
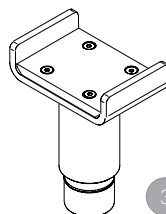
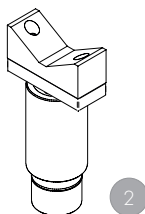
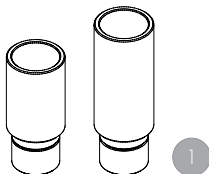


Wheel lifting device
(1 set / 4 pcs.)

GA490 GA550
ø wheel 590 - 690 mm ø wheel 670 - 770 mm
112051 112052

Mounting adapter

Swingarm RS
(1 set / 4 pcs.)
112145



1 Stacking adapter extension
89 mm 127 mm
d 50 x 89 mm d 50 x 127 mm
109679 (1 Set / 4 Pc.) 109680 (1 Set / 4 Pc.)

2 Stacking adapter V-shape
d 50 / 87 - 130 mm
112107 (1 Set / 4 Pc.)

3 Stacking adapter U-form
d 50
110397 (1 Set / 4 Pc.)

4 Stacking adapter NCV3
d 50 / 115 - 215 mm
112100 (1 Set / 2 Pc.)

pushAdapter
(1 set / 4 pcs.)
1112530

Bracket for stacking-
adapter extension
111578

Rubber elements 600 mm
50 mm 100 mm 200 mm
111677 111678 111679

Herrmann AG
Bahnhofstrasse 32
D-93483 Pöding

+49 (0)9461/91388 50
sales@herrmann-lifts.com
www.herrmann-lifts.com